

Kraftwerks May 2025 Newsletter



Cohesive Communication and Planning Equals Success

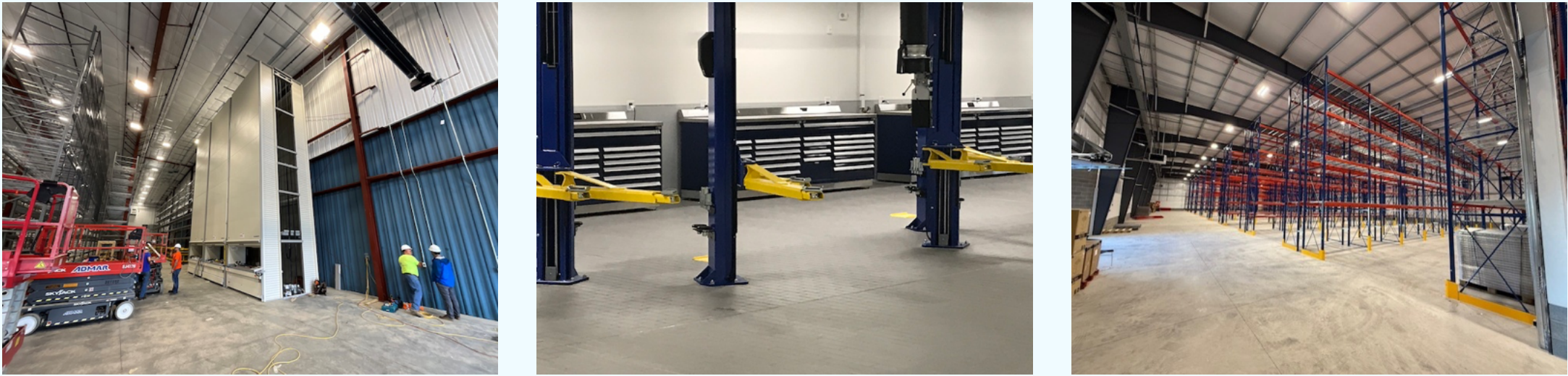
Attention to detail is crucial, and when initiating a project, it is essential to consider both the broader vision and finer details from the outset. Failing to communicate or limiting communication with all relevant parties (such as architects, interior designers, administration, staff, and builders) could impact the project's success.

When there is a lack of communication and coordination, important details may be overlooked. Involving all stakeholders and forming a unified team from the beginning (or as early as possible) ensures that small but important details won't be overlooked.

Developing the optimal solution for an organization also requires the integration of a diverse array of products from multiple vendors, as well as potentially repurposing and incorporating usable, existing equipment. This methodology ensures the solution will be tailored to the organization's specific needs, rather than a generic, one-size-fits-all model.

The Kraftwerks team has designed, collaborated on, and installed numerous applications across various industries. Prior to installation, we ensure meticulous planning of every detail from ceiling to floor and wall to wall. This includes the precise placement of outlets, walking paths, windows, and doorways within the initial design and workflow plan.

And we are successful because we know that forming a fully integrated team with all stakeholders right from the start really works.



Case Study Spotlight

Steuben Foods, Inc.

Product development demands were increasing for food and beverage manufacturer Steuben Foods, Inc. To accommodate that demand, their existing R&D laboratory needed to be enlarged and expanded.

The design of the new lab needed to address the essential requirements of an industrial, aseptic food and beverage research, development, and testing facility.

The lab was to include a fully equipped chef's kitchen, flavor room, and demonstration area designed for photography, serving as a platform to showcase newly developed products. Therefore, it was essential that the space be aesthetically pleasing.

The team at Kraftwerks identified and collaborated with the necessary stakeholders, which in this case included Steuben's chef. Because the lab was aseptic and required heightened safety standards, particular attention was given to the storage of diverse food and beverage components and products, and to preventing mold, mildew, and contamination.

One of the unique features of the lab was the installation of a high density mobile aisle storage unit capable of storing highly concentrated, industrial strength liquid flavorings.

The completed laboratory was an application featuring products integrated from multiple vendors. The layout, equipment, and furniture were meticulously designed and chosen to optimize workflow, ensure safety, and accommodate future needs, and on top of that, the lab had the clean, professional look the client desired.

Read the full Steuben case study, along with a few other case studies below.



Steuben Foods Case Study

- Parts by Cochran Storage & Space Solution
- Sweet Home H.S. Locker Rooms
- P&CG Storage & Space Solution
- Van Bortel Subaru Service Area
- Fairview Ltd. Storage Solution

Resource Videos and Links

- Kraftwerks Video Library
- Kraftwerks Laboratories
- Kraftwerks Line Card
- Kraftwerks Brochure
- Request a Quote
- Contact Kraftwerks
- Kraftwerks Website
- Kraftwerks Online Catalog

