

KRAFTWERKS

Creating space. Maximizing productivity. Since 1990.

Kraftwerks March 2025 Newsletter



Workplace safety is crucial. Planning in advance and implementing safety measures to prevent accidents can be a valuable investment.

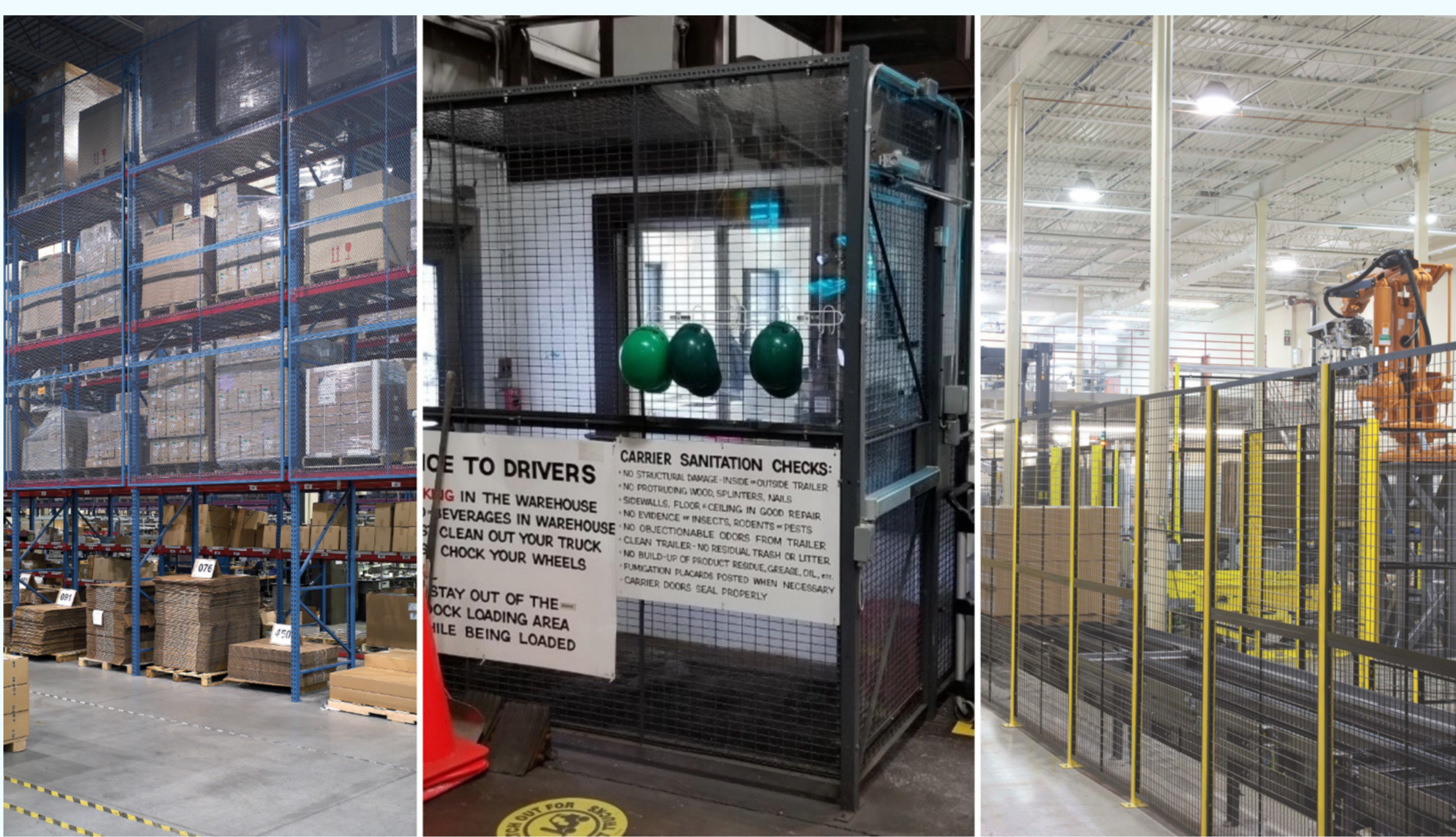
Workplace injury-related accidents that lead to worker's compensation claims commonly involve:

- Forklifts
- Loading docks
- Conveyors
- Manual lifting/handling

There are some key things you can focus on to improve workplace safety.

Limiting access is a necessary safety measure. This includes preventing unauthorized individuals from entering the facility, and restricting unauthorized employees from hazardous areas by installing driver cages and barriers.

Walkways should be clearly established, marked, and kept free of debris, and all racking should have appropriate guarding to protect employees from falling inventory and to protect racking from forklift damage.

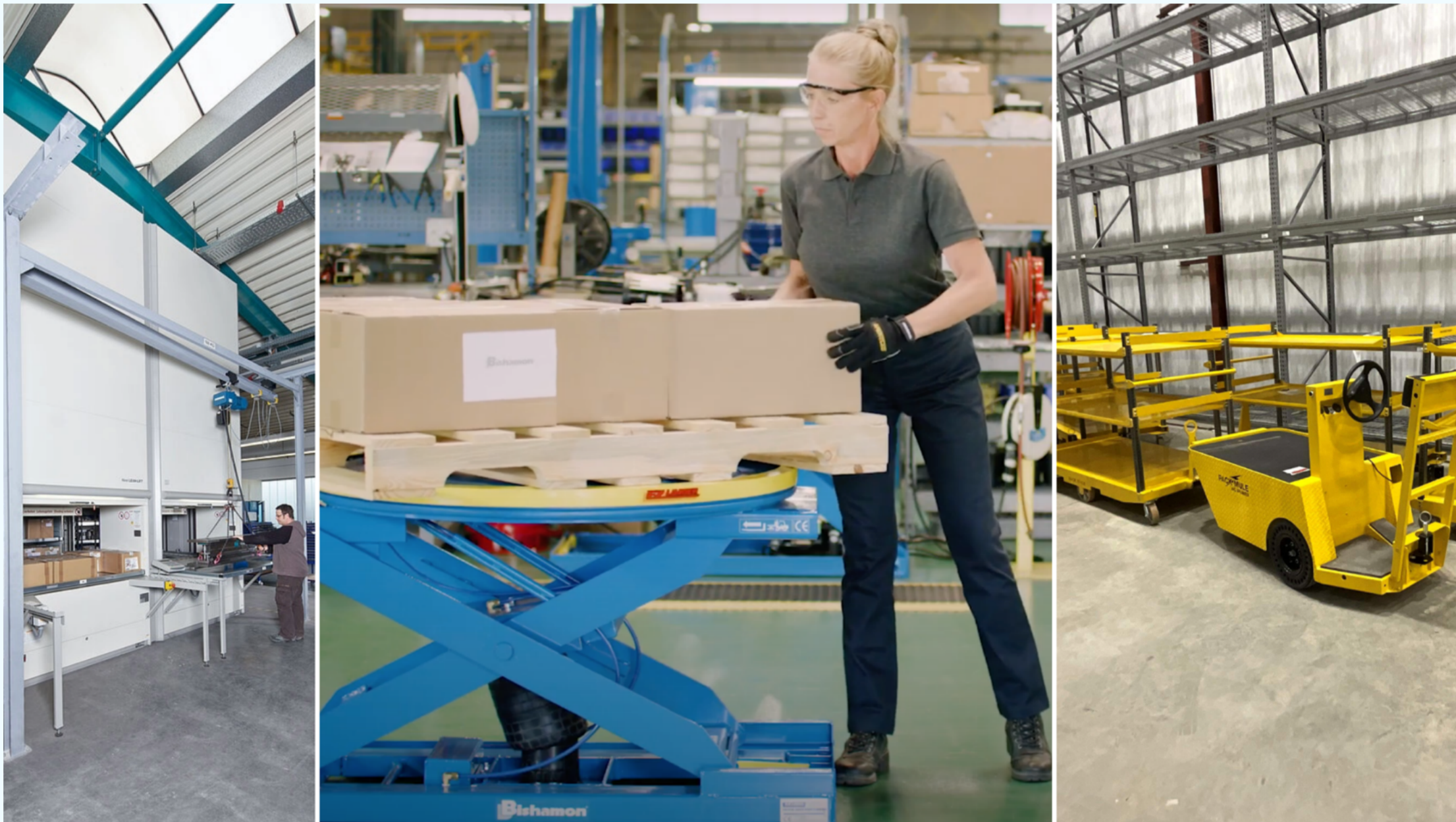


Selecting ergonomically designed equipment minimizes unnecessary bending, lifting, stretching, and steps. And as an added bonus, while ergonomic equipment is helping reduce workplace injuries, it's also enhancing workflow efficiency. And **regular maintenance and inspection of all equipment and furnishings** is not only recommended, but it's also necessary.

Finally, it's essential that all employees receive **adequate training** and are thoroughly informed about safety procedures and practices.

This information should be documented and encompass:

- Understanding of hazardous materials
- Regular safety protocols
- Clearly marked, adequately spaced emergency exit routes that are regularly inspected
- Emergency action plans
- Fire safety protocol



At Kraftwerks, we meticulously plan all applications with a focus on ergonomics and safety. Our certified technicians are highly trained to service and repair everything we install (including scissor lifts, cranes, hoists, carousels, conveyors, and more).

Kraftwerks works with an extensive list of proven vendors including Cogan, Bishamon, WireCrafters, Spanco and many more. Finding the right mix of products from reputable vendors is one of our specialties.

Contact us and we'll help you create efficient, useful, and safe space. Kraftwerks has offices in the Buffalo and Rochester areas.

Case Studies

[Parts by Cochran Case Study](#)

[Fairview Fittings Case Study](#)

Resource Videos and Links



- [Kraftwerks Lift Tables & Positioners](#)
- [Kraftwerks Cranes, Hoists & Lifts](#)
- [Kraftwerks Barriers & Guarding](#)
- [Kraftwerks Conveyors](#)
- [Kraftwerks Services](#)
- [Kraftwerks Resources](#)
- [Kraftwerks Line Card](#)
- [Kraftwerks Brochure](#)
- [Request a Quote](#)
- [Contact Kraftwerks](#)
- [Kraftwerks Website](#)
- [Kraftwerks Online Catalog](#)



Contact Us:
kraftwerks@kraftwerks.net
716.876.9000 --- 1.800.387.5397

[View this email in a browser](#)

[Unsubscribe](#)

Kraftwerks, Inc.
92 Cooper Ave
Tonawanda, New York 14150
Copyright © 2025 Kraftwerks. All rights reserved.