

Kraftwerks Newsletter

September 2023

Contact Us

Catalog

Quote

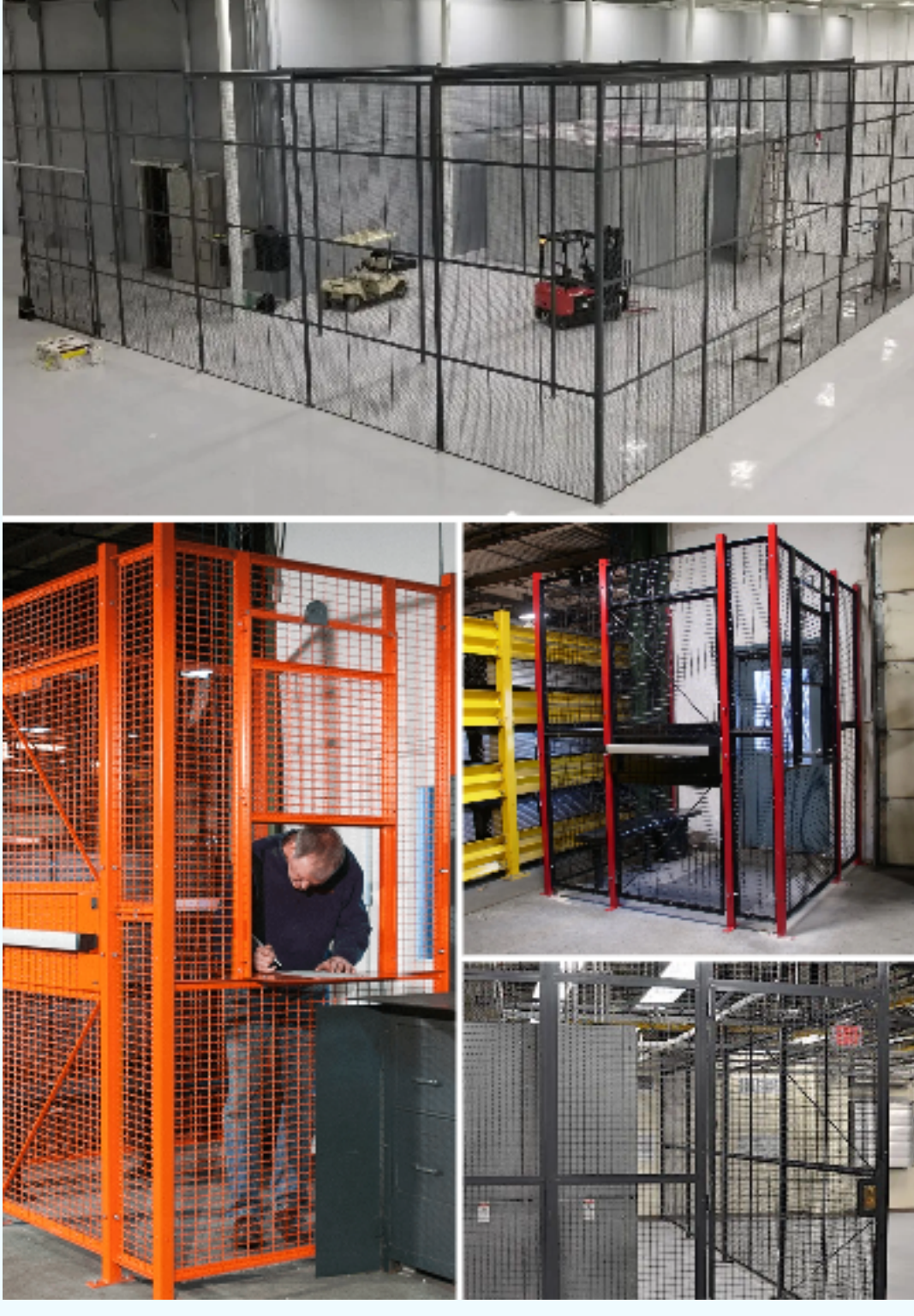
Line Card

Brochure

Website

Protect What's Important

Having a safe facility means preventing accidents. It means more than just protecting physical assets and inventory. It also means protecting your most valuable asset...your people.



Put Your Guard Up

Driver cages are structures with wire mesh partitions that surround building entry doors to confine truck drivers and other visitors to a defined area in your facility. They can be freestanding or anchored to building walls.

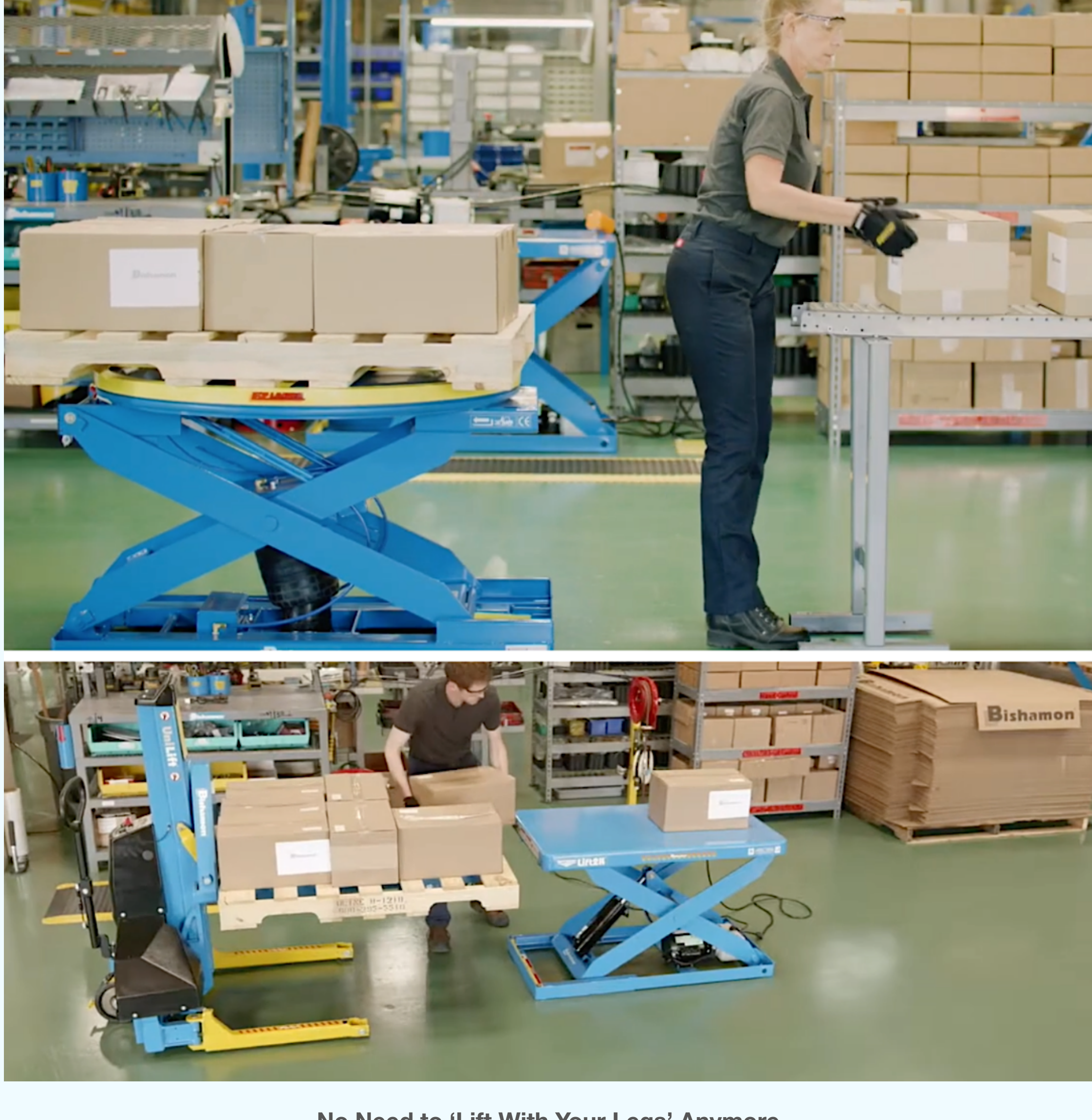
Driver cages are an easy, cost-effective way to control access to distribution centers, buildings, or factory floors. They are particularly important if you have high traffic from drivers, delivery personnel, visitors, and other non-employees.

Here are a few things driver cages do:

- Provide a safe, neutral zone for visitors, devoid of hazardous equipment or moving parts
- Guard against unauthorized 'wanderers' in your warehouse via unsecured entrances
- Inhibit theft of equipment, inventory, and sensitive information
- Wire mesh construction allows visibility and ventilation, while enabling staff to interact with visitors visually, verbally, and physically via service windows
- Limits liability for accidents and deters forklift and machinery accidents on the floor
- Controls entry via coded locks or remote control access
- Provides employees with a safe, one-way emergency exit from your warehouse

Inside the facility, wire partition enclosures provide safety, security, and separation, protecting tool cribs, maintenance cages, and inventory storage areas. They also can be used for guarding of machinery and robotic work cells.

Ask us about wire mesh enclosures, we can advise you on the most cost effective way to protect your facility and we'll provide a free quote.



No Need to 'Lift With Your Legs' Anymore

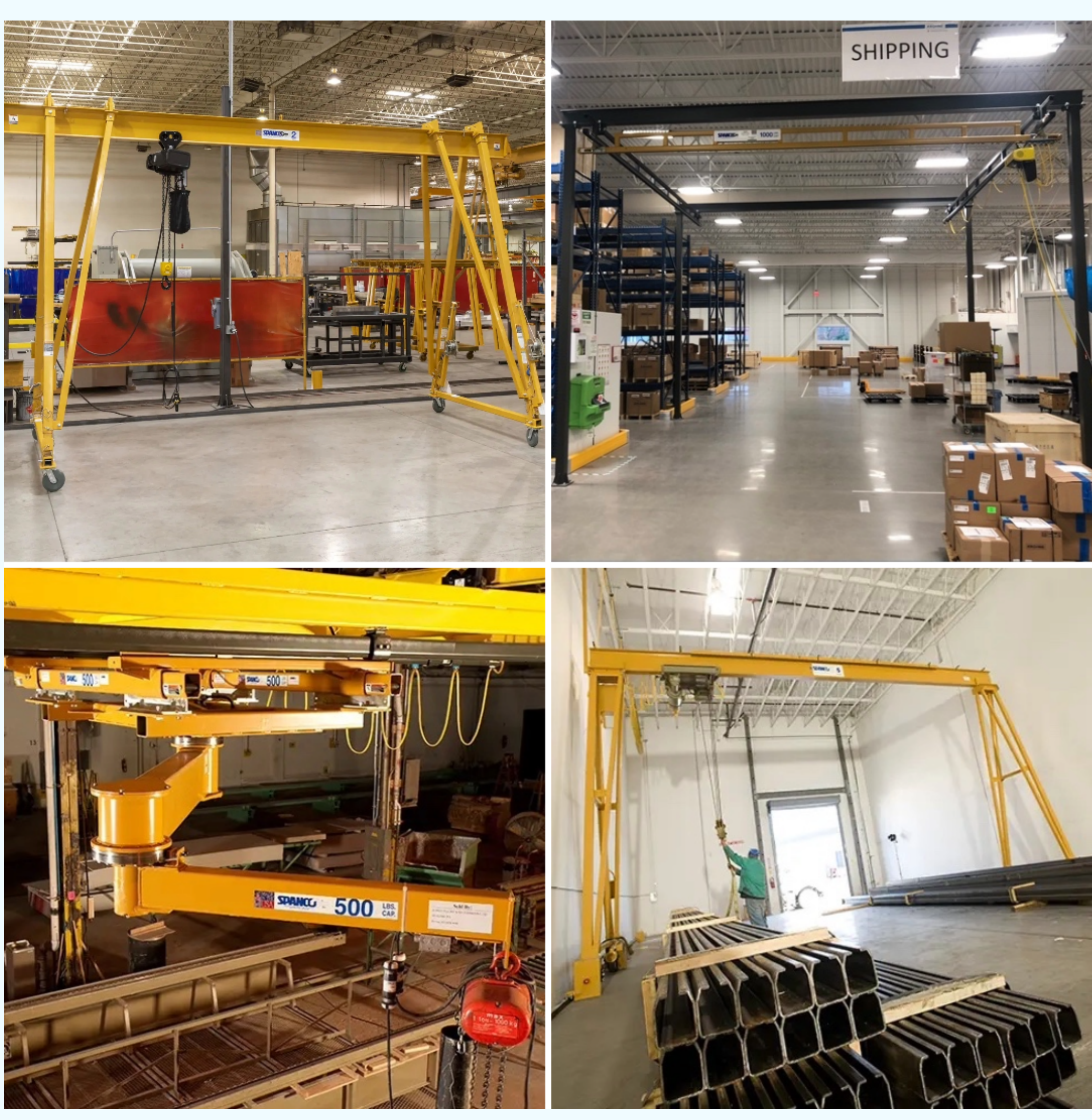
When picking up objects, slowly lift by straightening your hips and knees, not your back. We've heard this advice before, and it's good advice, especially for workers who load and unload pallets. But with the use of pallet positioners, there isn't a need to lift in this way anymore because the positioners do that part of the lifting *instead* of the worker.

Pallet positioners allow workers to ergonomically load and unload pallets by moving work to the employee—not the other way around. The positioners automatically adjust their height as items are added or removed, maintaining a consistent height at a level in the worker's "power zone."

Because workloads are maintained at a consistent height and allow for 360-degree access, they eliminate repetitive bending, reaching, stretching or walking around by the worker. There is less fatigue, which leads to faster pallet-building and de-palletizing. Productivity and throughput go up, while injuries and worker's compensation claims go down.

Benefits:

- Ergonomic
- Versatile
- Flexible
- Productivity
- Increased Safety
- Cost Savings



Help From Above

Worker safety is important. If workers get injured on the job, it's costly. The loss of trained, productive workers coupled with workman's compensation claims are a headache nobody wants.

Investing in equipment that makes the job easier for workers and adds a level of safety pays off in the long term. Adding an overhead crane (bridge, gantry, or jib crane) to your warehouse or distribution facility is cost effective. Cranes are mechanical lifting systems, able to transport loads horizontally or vertically within their range.

Benefits:

- Increased safety
- Improved load control
- Improved ergonomics
- Easy lifting of heavy or bulky/oversized loads (depending on the model & series, between 100-30,000 lbs.)
- Transport objects at heights able to avoid floor obstructions
- Enables more diversity in the workplace
- Inexpensive operating costs
- Customizable

The right solution can help improve lean manufacturing processes, safety, ergonomics, and worker autonomy/personnel reduction. It can also reduce workflow bottlenecks and increase productivity. The team at Kraftwerks has decades of experience creating the right solution.

Case Study

Ivoclar North America

At Kraftwerks, we know safety. Ask us about the incorporation of driver cages, guarding, pallet positioners and cranes to make your facility a safer, more productive one.

And Kraftwerks is also [certified in crane inspections](#). It's just one more way we can help make your facility better and safer.

Additional Resources

Kraftwerks & Driver
Cages/Enclosures

Kraftwerks & Pallet
Positioners

Kraftwerks &
Cranes

Kraftwerks Storage & Space Solutions Video

WireCrafters Driver
Access Cages Video

WireCrafters Separation
Panels/Partitions Video

WireCrafters Machine
Guarding Video

Bishamon EZLoader Video

Bishamon Hydraulic Lift Table Video

Spanco Bridge Cranes
Video

Spanco Jib Cranes
Video

Spanco Gantry
Cranes Video



Contact Us:
kraftwerks@kraftwerks.net
716.876.9000 --- 1.800.387.5397

[Click to view this email in a browser](#)

[Click Here to Unsubscribe](#)

Kraftwerks, Inc.
92 Cooper Ave.
Tonawanda, New York 14150
Copyright © 2023 Kraftwerks. All rights reserved.