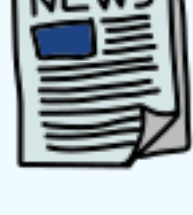


## Kraftwerks February 2023 Newsletter

[Contact Us](#)[Online Catalog](#)[Request Quote](#)[Line Card](#)[Brochure](#)[Website](#)

### Kraftwerks News



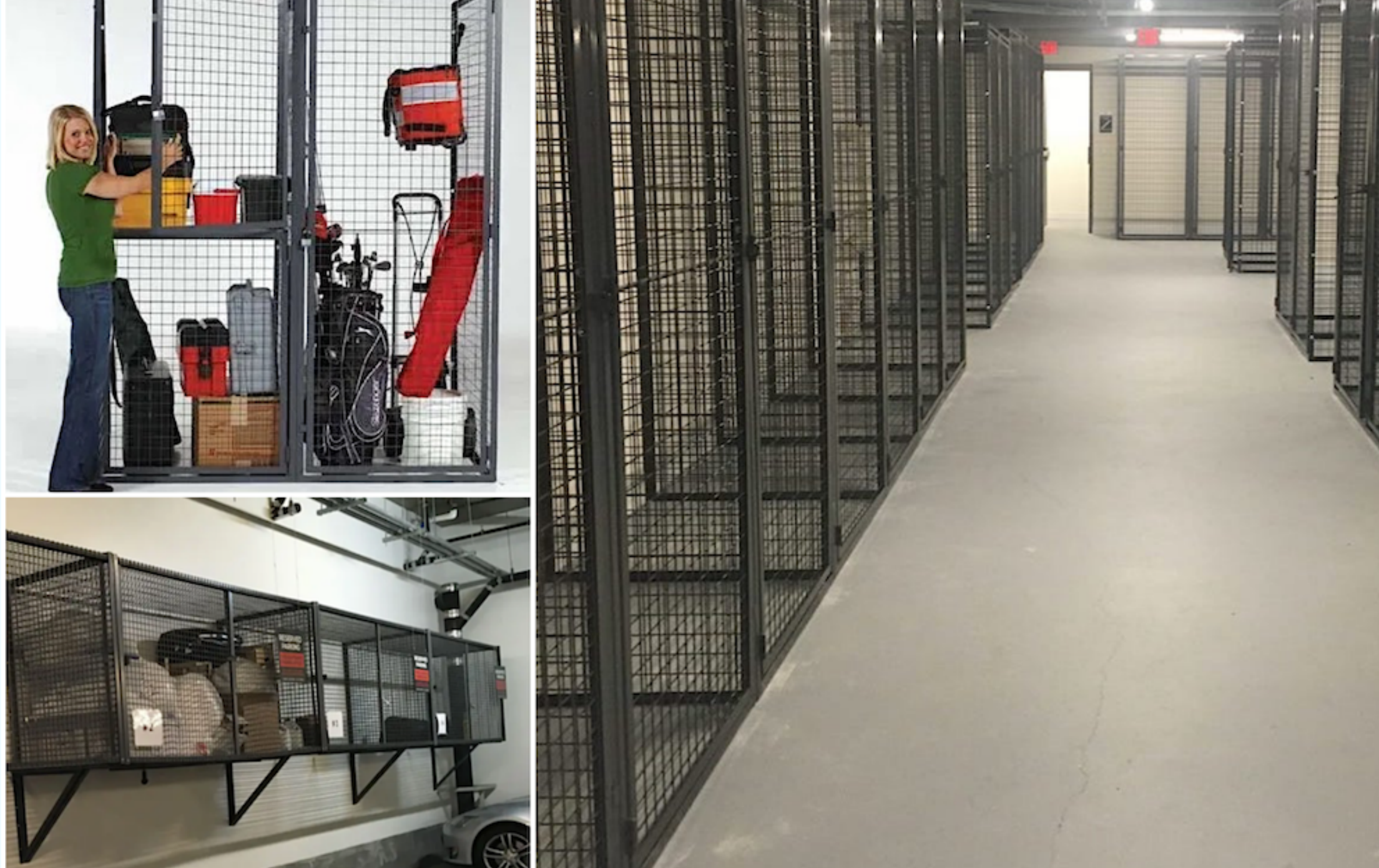
⇒ Kraftwerks has attained certification from the National Sanitation Foundation (NSF) for food equipment!

⇒ Kraftwerks has been awarded the *2022 Buffalo Niagara Business Ethics Crystal Award* from the Buffalo Niagara Business Ethics Association, whose mission is to foster, promote and recognize ethical business practices in Buffalo Niagara.

### Securing and Protecting the Gamut of Things in Your Facility

Kraftwerks has extensive experience in recommending and installing products that protect parcels, personal items, inventory, machinery/equipment, and people. We know what works best when it comes to storing and protecting everything from personal items to regular and/or sensitive inventory to heavy-duty machinery and weapons.

#### How Kraftwerks can help



### Tenant Lockers Pay for Themselves

WireCrafters all steel welded wire tenant lockers are a high value amenity for condos and apartment buildings. They are heavy duty, capable of handling a high amount of wear and tear so they'll last. Installing tenant lockers makes space more attractive to renters who may otherwise have to go offsite for additional storage. Tenant lockers reduce safety hazards in common storage areas by keeping them organized, eliminating clutter, and allowing for proper aisle space. And the lockers are secure, with a variety of lock options.

Units come in a variety of sizes. Kraftwerks' expert installation team will create a configuration with the highest number of lockers to optimize the available space. The best part though, is the lockers pay for themselves quickly through rental fees, after which they become a source of income.

- 2"x2" square 10-gauge welded wire mesh
- Standard sizes of 7' 6" high with 3-, 4-, or 5-foot-wide by 3-, 4-, or 5-foot-deep combinations
- Single tier walk-in (larger storage areas) or double tier (smaller, better for limited space or high number of tenants)
- Optional ceilings, shelves, bottoms, & back panels
- Garage style or metal lockers, & commercial storage rooms also offered

#### WireCrafters Tenant Locker Video



### Smart Lockers are a Smart Decision

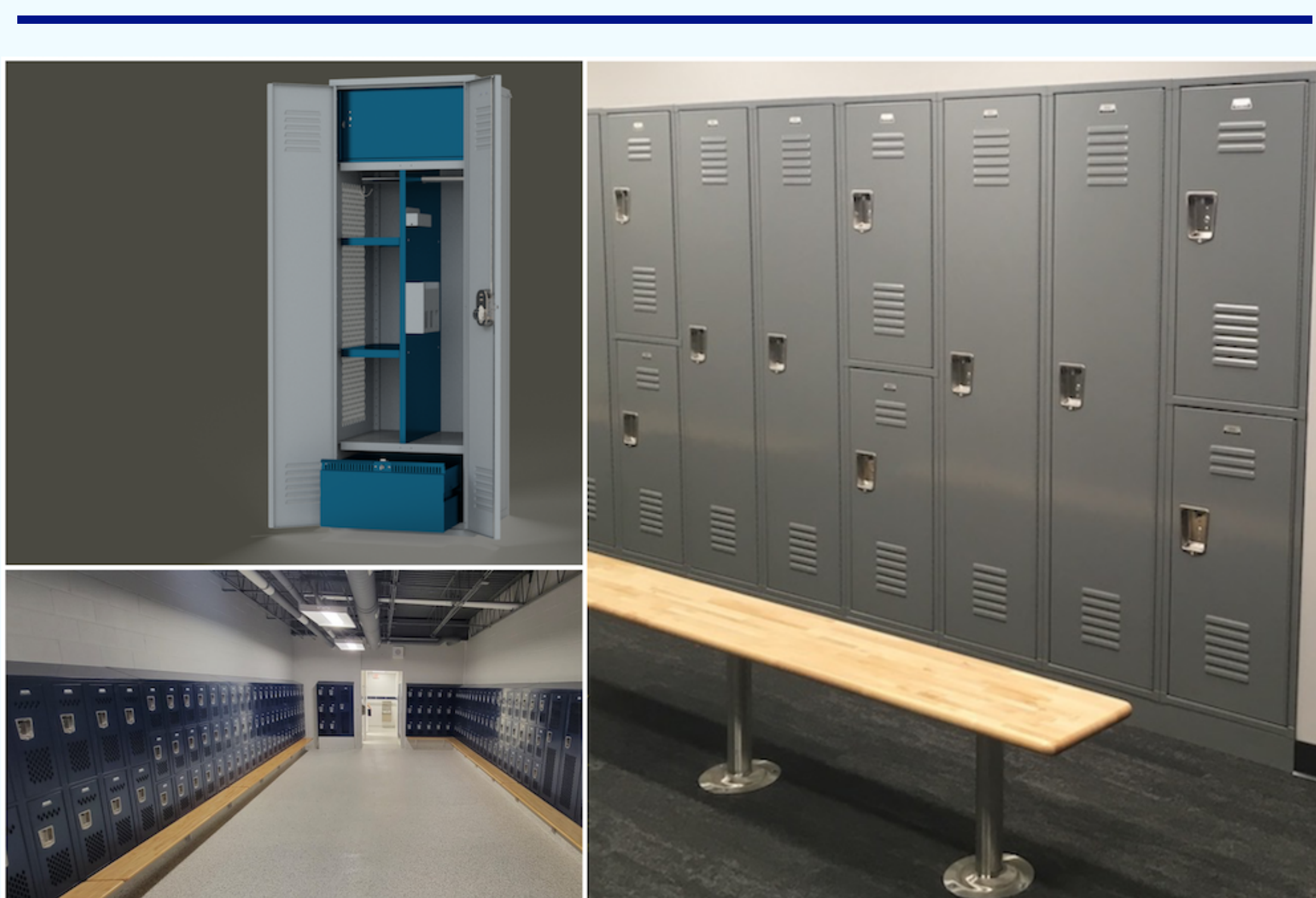
Luxer One smart lockers from GS Parcel not only deter theft, but also streamline both delivery and acceptance of parcels. The process is clean, easy, and secure. Delivery time is expedited since all packages are delivered to a centralized location. Cloud-based 24/7 video surveillance ensures delivery is secure and full chain of custody records are available. Smart lockers enable parcel recipients to pick up packages 24/7 using a secure protocol.

The protocol is simple.

1. Carriers deliver parcels to lockers using their secure access code.
2. Parcel recipients are automatically notified digitally of delivery & provided with a secure access code, as well as a QR code.
3. Upon entering that information at the locker kiosk, the appropriate access door automatically opens allowing recipients to retrieve packages.

The lockers are heavy duty, with tamper-proof internal hinges. Lockers are available for both indoor and outdoor environments. Units come in a variety of compartment size configurations, as well as refrigerated units.

#### Luxer One Smart Locker Video



### Lockers That are Anything but Ordinary

Penco lockers are ubiquitous in educational facilities. Lockers are heavy duty and made to withstand long-term use and heavy wear and tear.

Lockers come in a variety of configurations and sizes with multiple lock and security options. Different ventilation choices are available from vents on solid doors to diamond shaped perforations that provide maximum ventilation, as well as visual inspection of contents.

Penco lockers aren't just for schools. They are also widely used across other industries.

- Healthcare
- Sports arenas
- Health clubs
- Community parks
- Recreation centers
- Manufacturing companies
- Distribution warehouses
- Retail outlets
- Offices
- Government facilities
- Military, law enforcement, fire & rescue

Kraftwerks is a proud distributor of lockers from Penco as well as manufacturers like Hallowell, Datum (who offers DEA approved/tactical storage), and others. We know how to match the optimal locker with the facility and create a configuration that maximizes the use of the space available. Read our case study below to learn about our locker application at Sweet Home CSD.



### Sweet Home CSD Case Study



### Charge While Storing

Wireless, rechargeable technology has made our lives easier and helped streamline our work processes. The problem is those devices eventually need a "wire" to recharge. When devices are charging, they either cannot be used, or it's inconvenient to use them while "wired" to a charging device.

The best option is charging devices off hours when they aren't needed. But in off hours, devices also need to be secured, where they typically cannot be charged. It's a conundrum.

Datum offers a line of store and charge lockers and carts that do both. The units charge an array of devices including laptops, tablets, phones, and notebooks while they are securely stored. Choose from freestanding, mountable, or mobile options that hold single or multiple devices.



#### Watch Kraftwerks Secure Storage Solutions Video



Contact Us:  
kraftwerks@kraftwerks.net  
716.876.9000 --- 1.800.387.5397

[Click to view this email in a browser](#)

[Click Here to Unsubscribe](#)

Kraftwerks, Inc.  
92 Cooper Ave  
Tonawanda, New York 14150  
Copyright © 2023 Kraftwerks. All rights reserved.